

Design of an Intelligent Hydroponics System to Identify Macronutrient Deficiencies in Chili

Deffa Rahadiyan¹, Sri Hartati^{2*}, Wahyono³
Department of Computer Science and Electronics
Universitas Gadjah Mada
Special Region of Yogyakarta, Indonesia

Andri Prima Nugroho⁴
Departement of Agricultural and Biosystems Engineering
Universitas Gadjah Mada
Special Region of Yogyakarta, Indonesia

Abstract—Nutrient contents are important for plants. Lack of macronutrients causes plant damage. Several macronutrient deficiencies exhibit similar visual characteristics that are difficult for ordinary farmers to identify. Collaboration between Computer Vision technology and IoT has become a non-destructive method for nutrient monitoring and control, included in the hydroponic system. Computer vision plays a role in processing plant image data based on specific characteristics. However, the analysis of one characteristic cannot represent plant health. In addition, knowing the percentage of macronutrient deficiencies is also needed to support precision agriculture systems. Therefore, we propose a Multi Layer Perceptron architecture that can perform multi-tasks, namely, identification and estimation. In addition, the optimal architecture will also be sought based on the characteristics of the combination of three features in the form of texture, color, and leaf shape. Based on analysis and design, our proposed model has a high potential for identifying and estimating macronutrient deficiency at the same time as well and can be applied to support precision agriculture in Indonesia.

Keywords—Multi Layer perceptron; internet of things; feature combination; leaf image; nutrient deficiency

I. INTRODUCTION

The chili plant is a high economic value of the horticultural plant in Indonesia. However, the production level is lower than the consumption level, with inflation of 0.20% to 0.55% in 2019 [1]. The thing that causes low production is limited land due to the transition of the farming areas to settlements. Another thing is crop failure due to erratic weather changes, pest attacks, and plant diseases[2]. A System that can be applied to limited land in uncertain weather is hydroponics [3].

Hydroponics is a farming system that emphasizes the fulfillment of plant nutrients [4]. A plant needs macro and micronutrients to grow and develop [5]. Macronutrients include N, P, K, Ca, Mg, S (> 1000 mg/kg dry matter) and micronutrients include Iron, Mn, Zn, Cu, Cl, B, and Mo (<100 mg/kg dry matter)[6]. Inappropriate nutrient content causes plants to have macronutrient deficiency. Nutrient deficiency is more easily observed in the leaves [7], [8]. The symptoms in leaves include marginal, interveinal, and uniform chlorosis, distorted edges, reduction in the size of the leaf, necrosis, etc. [9]. However, identifying macronutrient deficiency is difficult for ordinary farmers because several nutrients show similar characteristics [10].

Technology in agriculture is an important part of supporting the application of industry 4.0 in Indonesia [11]. One of its applications is a monitoring and control system in intelligent hydroponics using the Internet of Things (IoT) [12]. One thing that needs to be monitored is the plant's health condition. Computer Vision is one of the technologies that can help the farmer to check the condition of plants [13], [14]. Collaboration between IoT technology and computer vision produces an automatic hydroponic system that can find out the condition of the plant and the solution.

Computer vision technology utilizes image data for analysis. Several images color model have been used, one of them is an RGB image that works like the human eye which is sensitive to the red, green, and blue light bands [15], [16]. Identification of macronutrient deficiencies using RGB leaves images has been carried out. Coffee, tomato, chili, cucumber, etc. have been analyzed using texture and color using K-Nearest Neighbors (KNN), Artificial Neural Network (ANN), Naïve Bayes [17], Multi Layer Perceptron (MLP), and Convolutional Neural Network (CNN) with various architecture [18], [19]. MLP gives a promising result. However, most of these studies only determined the type of nutrient deficiency [20]. To support a precise agricultural system, the percentage of deficiency is important so nutrient solutions accordance with plant needs [21], [22].

The percentage of macronutrient deficiency estimation using plant RGB images has been carried out [16], [23]. Color characteristics in plants have been used as in wheat using Multivariate Linear Regression, Genetic Algorithm, Back Propagation-ANN, and KNN [23], [24]. Texture features have also been developed using the Support Vector Machine (SVM) algorithm[25]. Several studies have also utilized deep learning such as in chili plants using Recurrent Convolution Neural Network (RCNN) [1]. Most of them only use one feature for estimation, so the resulting model is not robust for all types of macronutrients [26]. It because of each macronutrient shows different visual characteristics.

The proposed study is image-processing-based to identify and estimate the percentage of macronutrient deficiencies in a hydroponics environment. There are several phases to determine the lack of macronutrients such as image acquisition, preprocessing, segmentation, feature extraction, identification, and estimation task. The smart hydroponic system is assisted by IoT so that the process of image data acquisition is carried out automatically. Image data is crop

*Corresponding Author.

data in real conditions so, preprocessing such as histogram equalization is required. Then, the chili plant objects are separated from a complex background using a segmentation technique. One of the challenges faced at the segmentation stage is separating overlapping leaves images. A combination of three features in the form of color, texture, and leaf shape is proposed to support precision agriculture. Careful selection of features must be conducted to obtain accurate models. The main contribution in this paper is identification and estimation in a multi-layer perceptron architecture based on combination features. The study aims to identify and estimates five types of plant conditions such as healthy, potassium deficiency, calcium deficiency, magnesium deficiency, and Sulphur deficiency.

II. RELATED WORK

The study of macronutrient identification and estimation has been done from destructive to non-destructive methods [5], [16]. The destructive method is tested in the laboratory but it is costly and time-consuming[27]. Then, a monotonous and long duration of work would raise a human error [28]. Therefore, non-destructive is needed.

Internet of Thing is one of the non-destructive methods that have been used [29]. IoT can be used to monitor and control physical phenomena around agricultural environments such as temperature, light intensity, pH, and others [30], [31], [33]. Not only observing, but IoT also helps to determines the health condition of plants based on the image data [38]. However, the visual condition of the plant is not considered, even though the condition of the plant is important. Table I shows visual characteristics of several macronutrient deficiencies. A sensor that can perform visual plant condition is camera sensors that usually used for monitoring the agricultural environment [39].

The camera is useful for capturing plant images in a hydroponic environment [34]. Some of the plants that have been observed are tomato, chili, tobacco, spinach, okra, and others [28], [35], [36]. Digital image processing is used to analyze the captured images to obtain plant conditions. Plant conditions that will be analyzed are the type of macronutrient deficiency and the percentage. These stages are preprocessing and augmentation, segmentation, feature extraction, to identification and estimation tasks [22], [37].

Preprocessing uses to improve image quality[48]. Several preprocessing types are an enhancement, resizing, histogram equalization, and others[7]. Histogram equalization has been used to cope with different exposures on captured images [39], [40]. Then, data augmentation is a process for data enrichment. One example of data augmentation is processing rotation and blurring [41]. The study [42], [43] has proven that image augmentation so that each class has the same amount of data increases the accuracy of the model.

Segmentation is process to separate objects from the background, even a complex background [9], [16]. Several methods have been applied for segmentation, from K-Means Clustering, Genetic Algorithm with DSELM, Otsu, masking

green, Fuzzy C-Means (FCM) method to thresholding [21], [22], [44]. However, thresholding and green masking methods cannot overcome overlapping leaves. FCM is a clustering method that can group data. In [45], it is proven that FCM can overcome overlapping objects.

Feature extraction can be done using several methods based on the information characteristics. Statistical features in the RGB, HSV, and YUV color models represent color information from objects [24], [32]. While some methods, such as GLCM, Sobel, etc., can represent texture and shape information on leaf objects [17]. Feature combination is important because each deficiency shows a different visual features[9]. There is a nutrient that shows color characteristics, and some do not. Therefore, a combination of 3 features such as color, shape, and leaf texture is needed. A combination GLCM, hue, and color histogram has been used to analyze maize plants [46]. Then, a combination of RGB and Sobel edge improves the accuracy [21], [35].

Several methods have been used to identify and estimate macronutrient deficiencies in plants, such as Rule-based method to deep learning in the different models [47], [48]. The rule-based, histogram, and RGB-based method were used to identify leaf deficiency [48], [49]. However, those methods cannot handle data with high variance. Learning methods such as supervised learning have also been used, such as MLP, ANN, KNN, SVM, and others [24], [50], [51]. MLP shows promising results for data in different lighting conditions [52]. It can be concluded that MLP is a method that can be used to process hydroponic data in a natural environment. Each method is only robust on certain macronutrients. It is proven in [26] study using the derivative function method. The first derivative obtains more accurate results for predicting N, P, and S. Nutrient such as Mg, and K in plants uses logarithmic transformation while Ir uses smoothed reflectance. Br and Mn use the first derivative, while Zn uses the second derivative. In addition, CNN with various architectures has been used. However, it is a black box method [2], [8], [53] so it can be challenging to analyze the effect of feature combinations on the resulting model. Table II shows a summary of some of the studies that have been mentioned.

TABLE I. KEY SYMPTOMS OF NUTRIENT DEFICIENCIES [19]

Type of Deficiencies	Characteristics of leaves plant			
	Colour	Shape	Texture	Part of Plant
(-Ca)	Healthy Green	Misshapen	curling leaf tip	Top
(-N)	Turning yellow	Ellipse	Smooth	Bottom
(-Mg)	Necrosis (cell injury), interveinal chlorosis	Ellipse/ Misshapen	Smooth	Bottom
(-K)	Brown in the edge	Misshapen	Curling	Top
Health	Green	Ellipse	Smooth	overall

TABLE II. RESEARCH ON IDENTIFICATION MACRONUTRIENT DEFICIENCY

Plant	Dataset	Preprocessing	Feature Extraction	Classifier	Result	Reference
Paddy	500 images for 5 categories	resize to 256x256 and Median Filter	RGB feature (0-255)	Rule based	improving the database and refining the rules can improve the accuracy.	[54]
Paddy	400 images for 5 categories	RGB to HSV	HSV color model	Rule based	86% of accuracy	[48]
Coffee	269 images for 4 categories	Segmentation using Otsu method	BSM and GLCM to extract Shape and Texture	KNN, Naïve bayes, NN	the best results associated with the GLCM for Iron	[17]
Wheat	360 images	Segmentation using DSELM and GA	Color	a number of DSELMs and committee with GA	single color features and their combinations are not suitable to estimate nitrogen	[22]
Okra Plant	231 images for 4 categories	Resizing image to 299 x 299 and data augmentation using ImageDataGenerator by Keras	Automated FE	Inception ResNet-v2 CNN	the amount of data for several deficiency only produces 2 classes	[35]
Banana	540 images for 4 categories	Data augmentation, RGB convert to YUV, HE, CIELAB, YCbCr and HSV.	Automated FE	Neural Network. VGG16 model.	The model has very high accuracy and minimal error by data augmentation	[42]
Tobacco	204 tobacco leaves for tested	RGB to HSV color space, image thresholding, morphological operation, and crop leaf image	Color analysis	Voting from each patch based on a set of thresholds	The proposed method was able to detect the defect and classify tobacco leaf with 91.667% accuracy	[28]
Eucalyptus	100 leaves	First and second Derivative, Leaf reflectance logarithmic transformation	Color feature	PLSR	each nutrient has high performance in different methods	[26]
Tomato	596 images	596 images of 3024 x 4032 px size were stored in the dataset	a set of convolutional layers as the feature extraction part,	CNN+AHN	CNN+AHN is able to estimate with an accuracy of 95.57% outperforming the literature	[8]
Olive tree	4000 images for 2 categories	RGB to HSV color space, masking	YGB, percentage of RGB value	ML, decision tree and Naïve Bayes models	machine learning model showed the best results with 97% accuracy.	[55]
Multi Plant	484 for training and 13 for testing	There is no pre-processing	Automated FE	CNN	the model only search for colors in the leaf images	[56]
Multi Plant	5000 images of different plants	preprocessing task using SMOTE	CNN is used to extract the patterns of leaf images	the use of an EM classifier to supplement the ELM-based classifier.	proposed modified CNN model obtains improved training and testing classification accuracy than other methods.	[29]
Rice	8911 images for 5 categories	Segmentation using Mean Shift image. Then, RGB image is convert to grayscale for other color model such as YCbCr and HSI	Color using Ybr and HSI value, shape using traditional shape feature such as area, roundness, shape complexity	CNN, Deep learning CNN + SVM, AlexNet, VGG	CNN with image segmentation shows better result than without segmentation. But, CNN +SVM best result.	[57]
Vigna Mungo	4088 images for 7 categories	Flipping and resizing of the image,	taking the advantages of the deep pre-trained model using ResNet50	CNN, SVM, and MLP	MLP achieved superior performance than SVM and logistic regression by the accuracy of 88.33 %.	[14]

Based on some of the literature reviews above, it can be concluded that IoT and Computer Vision-based in smart hydroponic farming can help farmers find outcrop conditions

quickly. In addition, methods for analyzing image data are essential, such as MLP, which can process image data with different lighting. Then, MLP performs the best result with 88,33 accuracy than logistic regression and SVM in [14].

Several features can be used to analyze, such as histogram value, HSV statistic value, texture using GLCM, and others. But, several researches above shows that the types of features analyzed from the image data need to be combined to improve the quality of the model so that the model can be robust across various types of macronutrients.

III. PROPOSED SYSTEM

This section discusses intelligent hydroponics system workflow and Computer Vision in Hydroponics systems. The discussion of the two parts of this model answers the research question.

A. Smart Hydroponics System Workflow

Overall, there are three steps in a hydroponics system such as data acquisition, data analysis, and user area. Fig. 1 presents a schematic of the proposed model. Based on Fig. 1 below, Part A is the data acquisition stage. Part B contains a process to identify and estimate macronutrient deficiency in the plant. Then, part C is an interface that connects farmers with hydroponic systems so plants and agricultural environments can be observed and controlled well. The hydroponic system runs automatically. The detail of each part is discussed below:

- **Data Acquisition:** There are two types of data in the hydroponic system: agricultural environmental and plant conditions data. The environment data includes light intensity, humidity, temperature, and water levels. While plant conditions are plant image data. Each sensor acquires different data. Then via Raspberry Pi, data is sent to the server using Wi-Fi and other protocol.

Image plant data is taken in the morning and afternoon to avoid distraction by lighting conditions. Image data is taken using a camera sensor with a certain distance.

- **Data Analysis:** Data is grouped into a database according to their needs. Plant image is used to test the identification and estimation model that has been built using digital image processing and machine learning. The result is plant condition and their percentages. These results are used as input on the Nutrient Control to give nutrient solutions according to plant needs.
- **Web Development:** Hydroponic runs automatically, but each process can be observed on the web development interface that can be accessed through computers or smartphones. So, users can observe the ongoing process and control the agricultural environment.

B. Identification and Estimation Process

Image data are analyzed using digital image processing. Fig. 2 shows a flowchart of identification and estimation of macronutrient deficiency. The stages of digital image processing are divided into five stages. The first stage is preprocessing using histogram equalization and extraction of three types of features. Features are selected and combined with high considerations so that the analyzed features can represent the condition of the plant, then, training to determine the percentage of visual characteristics match. The percentage of visual characteristics becomes the input for the MLP training stage. The output is an appropriate identification and estimation model.

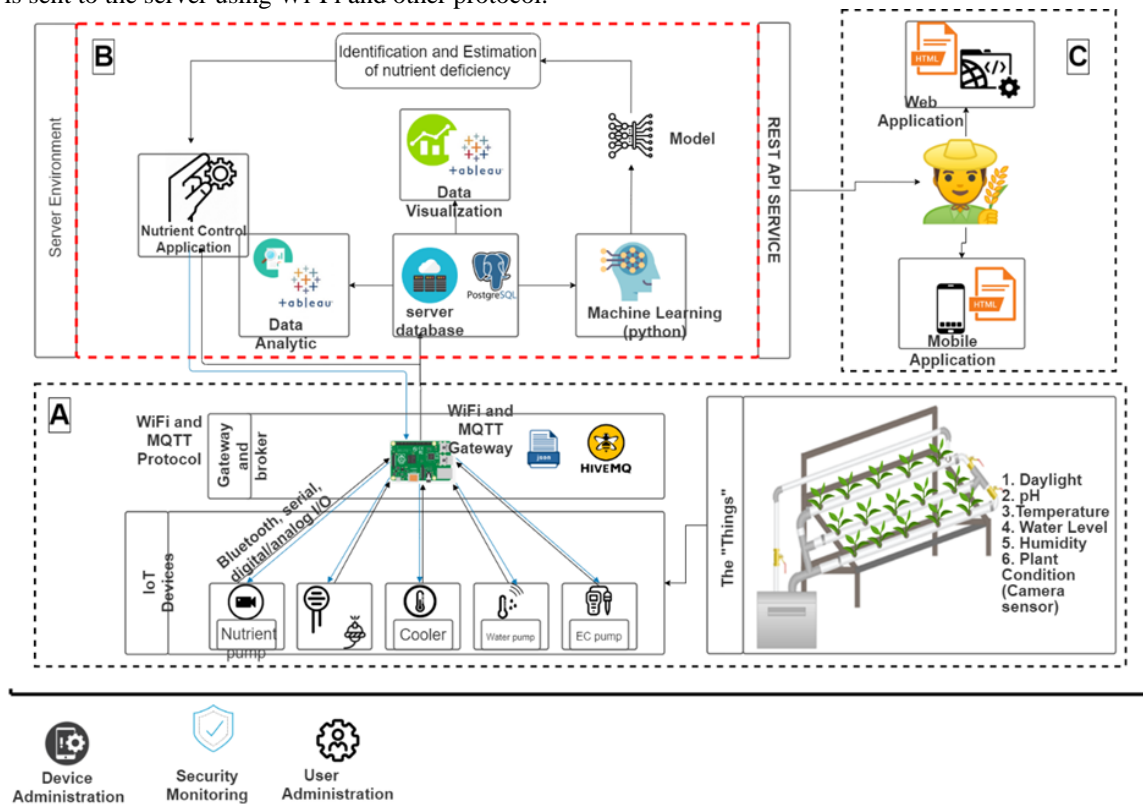


Fig. 1. Smart Hydroponics Design System.

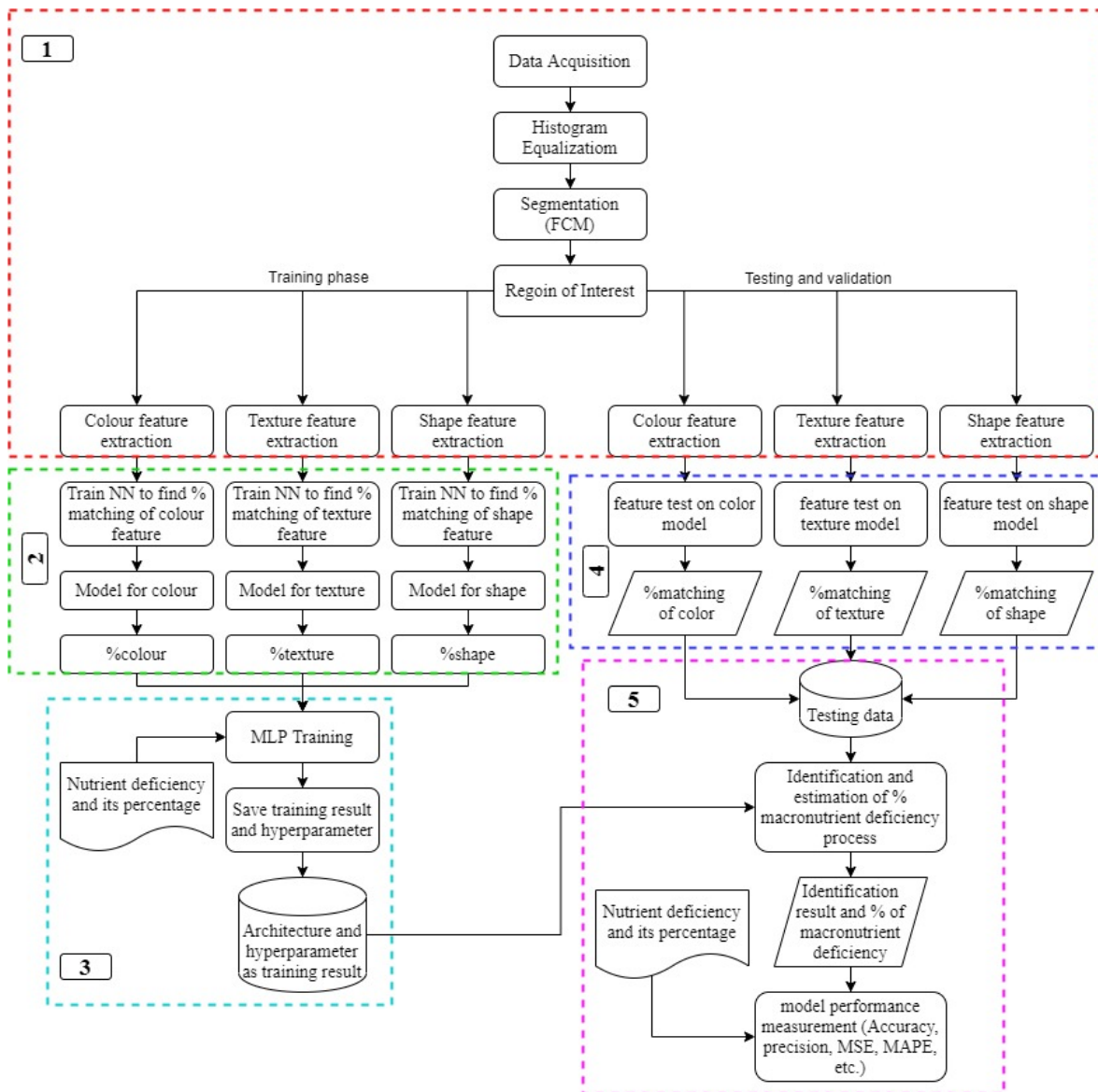


Fig. 2. Identification and Estimation Macronutrient Deficiency Steps.

In this proposed method, there are two types of training data. The first train is to determine the percentage of matches based on visual characteristics. Then, the second train uses the percentage of matching data obtained from the first training for identification and estimation tasks. Our model develops a system that can identify macronutrient deficiencies and estimate the percentage of deficiency at one time. In addition, we are also looking for the suitable MLP architecture based on the combination of three features used, namely color, shape, and leaf texture. The model is evaluated using two different types of evaluators based on their tasks. The last is the resulting model will test in a natural hydroponic system environment that has been build. Each stage is described in detail in the next section.

IV. EXPERIMENTAL RESULT AND DISCUSSION

This section discusses the detail process of image processing in hydroponic systems. The camera acquires the

image data in natural environment. Fig. 3 shows some results of image acquisition of chili plants. Healthy plants are given different treatments by reducing certain macronutrients. After 1 week, the plants will show visual characteristics. The planned amount of data taken is 500 for each class. The data includes data with a percentage label of the deficiency.



Fig. 3. Image Plant Data in Real Condition.

1) *Preprocessing and feature extraction*: Each training and testing data are treated the same at this stage. The result of the acquisition is an RGB image with different lighting. Histogram equalization is applied to equalize the different exposures in the image. Where the results of the conversion of RGB to HSV images are transformed into histograms so that they can be normalized using the Cumulative Distribution Function (CDF) as shown in (1) where n_{r_j} is the histogram value and n is the total [51]. Then the intensity transformation is carried out from the input image r_k to s_k as shown in (2) with a pixel of level L .

$$cdf(j) = \sum_{j=0}^k \frac{n_{r_j}}{n} \quad (1)$$

$$s_k = T(r_k) = \text{round}(cdf(r_k) \times (L - 1)) \quad (2)$$

The result of Histogram equalization shown on Fig. 4 It will be segmented to separate objects from complex backgrounds using FCM. FCM is a clustering method that can be used for abstract data. In this case, FCM is used to overcome overlapping leaves. The basic idea of FCM is to divide n pieces of data into non-unique sets to improve cluster data based on membership degrees, where the membership degrees are real numbers in the range [0,1] [52]. To select the leaves that are not overlapping ROI is applied. Segmentation and ROI result are several single leaf images whose leaves do not overlap as shown on Fig. 5.

Feature extraction is performed for each single leaf image. In this study, three features used are: shape, texture, and leaf color. These traits were chosen based on the leaves visual characteristics. Each feature is processed using a different method. Color feature extraction using HSV values, texture feature extraction using Gray Level Co-occurrence Matrix (GLCM), and shape feature extraction using Canny edge detection with Freeman Chain code. The output of color feature extraction is Mean value in (3), Standard deviation in (4), and skewness in (5) for each H, S, and V [48]. Where μ is Mean, σ is Standard Deviation, M is image dimension based i -th pixel, N is the total number of j -th, and I_{ij} is value of the j -th pixel of the image at the i -th color channel.

$$\mu = \frac{1}{MN} \sum_{i=1}^M \sum_{j=1}^N I_{ij} \quad (3)$$

$$\sigma = \sqrt{\frac{1}{MN} \sum_{i=1}^M \sum_{j=1}^N (I_{ij} - \text{Mean})^2} \quad (4)$$

$$\text{Skewness} = \sqrt[3]{\frac{1}{MN} \sum_{i=1}^M \sum_{j=1}^N (I_{ij} - \text{Mean})^3} \quad (5)$$

While the GLCM output is two parameters, such as Angular second moment (ASM) in (6) and Inverse Difference Moment (IDM) in (7) [17]. In shape feature extraction, it is still a chain code. Chain code can be converted into 15 normalized Elliptic Fourier Descriptors based on the Chain code result.

$$\text{Kontras} = \sum_{n=1}^L n^2 \{ \sum_{|i-j|=n} \text{GLCM}(i, j) \} \quad (6)$$

$$\text{IDM} = \sum_{i=1}^L \sum_{j=1}^L \frac{(\text{GLCM}(i, j))^2}{1+(i-j)^2} \quad (7)$$

2) *Training to get matching percentage of visual characteristics*: The results of each feature extraction are trained using NN-Backpropagation to check the matching percentage of characteristics. The output of NN-Backprop is the percentage matching characteristics which grouped into specific types, as shown in Table III. For example, for Nitrogen, The possible matching percentage is shown in Table III. The output of NN-Backprop is input into the MLP architecture, so the type of nutrient deficiency and its percentage are known.

3) *Training to get identification and estimation model using mlp*: The model proposed in this study is an MLP architecture that can perform estimation and identification simultaneously. The model has two output types. They are numerical predictions and class predictions. Fig. 6 shows the proposed MLP architecture.

The type of MLP developed is fully connected. Each neuron is accumulated using a certain activation function where W_i is the weight of the i -th data, X_i is the i -th data, the value of b is the bias, and y is the output. Neuron input consists of nine values of chili plant matching percentage normalized with a range of [0-1]. After normalization, initialized weights and biases are given for each input neuron to the hidden layer with values $w_{11}, w_{12}, \dots, w_{xx}$, and $b_{11}, b_{12}, \dots, b_{xx}$ [19]. The decision layer has three neurons, where two neurons are for identification and one neuron is for estimation. The MLP output representation uses a binary output with the number of classes is 2^n where n is the number of neurons.

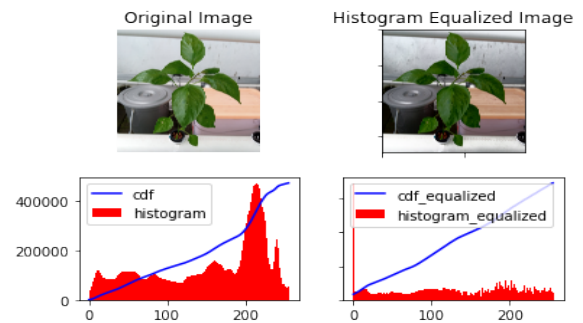


Fig. 4. Histogram Equalization Result.

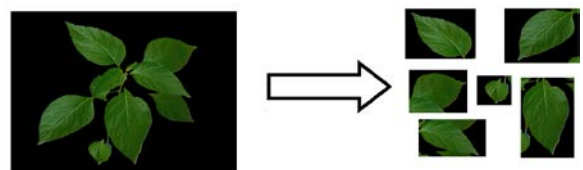


Fig. 5. Segmentation and ROI Result.

TABLE III. TYPE OF VISUAL CHARACTERISTICS

Colour				Texture			Shape	
Dark green	Yellow	Brown	Green	smooth	wavy	hole	Normal	Mishapen
10%	75%	5%	10%	80%	15%	5%	90%	10%

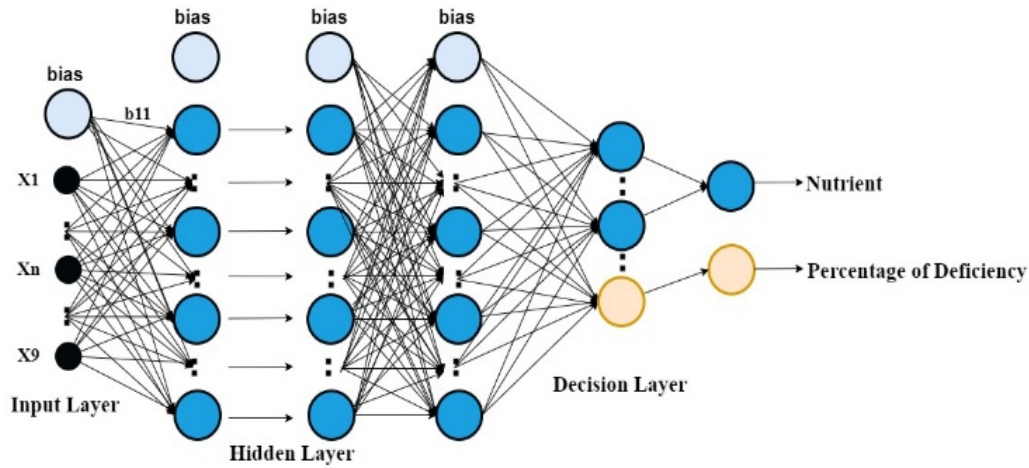


Fig. 6. Multi Layer Perceptron Architecture Design.

The activation function in the hidden layer is different from the output layer. Each neuron in the hidden layer uses the Rectified Linear Unit (ReLU). ReLU makes a limit on the number zero, if $x \leq 0$ then $x = 0$ and if $x > 0$ then $x = x$ as shown in (8)[14]. Meanwhile, in the decision layer, two different activation functions are used. A numerical prediction has single node and SoftMax activation function[5]. SoftMax not only maps the outputs to the range [0,1] but also maps each output with the total sum is 1. Therefore, SoftMax's output is suitable for the binary classification problem [0,1] as shown in (9). The Sigmoid activation function as shown in (10) is used for the estimation[58]. The sigmoid output normalized to obtain the percentage of macronutrient deficiency in the range 0%–100%.

$$f(x) = \max(0, x) \quad (8)$$

$$Softmax = \frac{e^{z_i}}{\sum_{j=1}^K e^{z_j}} \quad (9)$$

$$\phi = \frac{1}{1+e^{-y}}, \text{ where } y = (\sum_{i=1}^n W_i X_i + b) \quad (10)$$

In the machine learning method, the loss function is used to optimize the model during training so that the error is minimum. In identification task, the loss function that will be used is Categorical Cross Entropy that can be shown in (11) where L_{CE} is the loss category entropy, T_i is the target value and S_i is the result of the Softmax. A good model has L_{CE} close to 0. However, estimation task uses Mean Square Error (MSE) [59].

$$L_{CE} = -\sum_{i=1} T_i \log(S_i) \quad (11)$$

The number of hidden layers used affects the learning process. More hidden layers are used, the deeper features are studied. In the proposed model, the exact number of hidden layers and nodes of MLP is sought so that the optimal architecture is produced based on the three features combination. The effect of the number of epochs, learning rate, and others are considered.

4) *Find match percentage of testing data:* The test data that has been through the preprocessing process is searched for the matching percentage of the visual characteristics using

the NN-Backprop model from the previous stage. The expected output is to know each matching percentage of the visual characteristics.

5) *Identification and estimation macronutrient deficiency:* The matching percentage of its characteristics data is tested on the MLP model to know plant condition and its percentage. An evaluation is carried out to find out the model's performance against the test data. The identification task is evaluated using the confusion matrix to get the accuracy and precision based in (12) and (13) [9,14]. The rule of a confusion matrix is shown in Table IV.

TABLE IV. CONFUSION MATRIX REPRESENTATION [60]

		Prediction Class	
		Positive	Negative
Actual Class	Positive	TP	FN
	Negative	FP	TN

While the estimation task is evaluated by calculating the error using Mean Square Error (MSE) and Mean Absolute Percentage Error (MAPE). Predictive result are good if the MAPE value is less than 10% [58]. Meanwhile, for MSE using a gradient-based method, a lower value makes a better prediction. The formula for calculating MAPE and MSE can be observed in (14) and (15) where Y_t is the actual value of period t , Y'_t is the forecast value of period t , and n is the number of periods.

$$Accuracy = \frac{TP+TN}{TP+TN+FP+FN} \times 100\% \quad (12)$$

$$Precision = \frac{TP}{TP+FP} \times 100\% \quad (13)$$

$$MSE = \frac{1}{n} (\sum_{i=1}^n (Y_t - Y'_t)^2) \quad (14)$$

$$MAPE = \frac{1}{n} \sum_{t=1}^n \frac{|Y_t - Y'_t|}{Y_t} \quad (15)$$

The intelligent hydroponic system can identify nutrient deficiencies and provide solutions automatically. Based on the analysis and literature study that has been done, the proposed

model potential is to be applied. The MLP architecture performs two different tasks, namely, classification and regression. In addition to developing a multi-task architecture, the number of hidden layers and nodes will find based on the combination of the three features used.

V. CONCLUSION

This research is in the stage of data collection and software development. Intelligent hydroponics hardware has been built and is still being evaluated based on system requirements. This proposed model answers research questions about identifying and estimating macronutrient deficiency in intelligent hydroponics systems. First, identification and estimation are faster and more precise so that the provision of plant considers the needs of plants. Second, three features combination such as color, shape, and leaf texture is applied to increase information so that the system can identify the right type of nutrient. Third, build a model that can perform both identification and estimation tasks. Fourth, it analyzes more than one type of nutrients to be applied in the real environment. In the future, this model can be implemented in the natural environment of intelligent hydroponics systems in Indonesia. Limitations still exist because the model is only implemented in chili hydroponics plants.

ACKNOWLEDGMENT

This work is funded by the Ministry of Research and Technology of the Republic of Indonesia in the PMDSU program. The authors also gratefully acknowledge the helpful comments and suggestions of the reviewers, which have improved the presentation.

REFERENCES

- [1] A. R. Bahtiar, Pranowo, A. J. Santoso, and J. Juhariah, "Deep Learning Detected Nutrient Deficiency in Chili Plant," 2020 8th Int. Conf. Inf. Commun. Technol. ICoICT 2020, 2020, doi: 10.1109/ICoICT49345.2020.9166224.
- [2] L. C. Ngugi, M. Abelwahab, and M. Abo-Zahhad, "Recent advances in image processing techniques for automated leaf pest and disease recognition – A review," *Inf. Process. Agric.*, vol. 8, no. 1, pp. 27–51, 2021, doi: 10.1016/j.inpa.2020.04.004.
- [3] U. Nurhasan, A. Prasetyo, G. Lazuardi, E. Rohadi, and H. Pradibta, "Implementation IoT in System Monitoring Hydroponic Plant Water Circulation and Control," *Int. J. Eng. Technol.*, vol. 7, no. 4.44, p. 122, 2018, doi: 10.14419/ijet.v7i4.44.26965.
- [4] E. S. Putra, J. Jamaludin, and M. D. Djatmiko, "Comparison of Hydroponic System Design for Rural Communities in Indonesia," *J. Arts Humanit.*, vol. 7, no. 9, pp. 14–21, 2018, doi: 10.18533/journal.v7i9.1490.
- [5] L. N and K. K. Saju, "Classification of Macronutrient Deficiencies in Maize Plant Using Machine Learning," *Int. J. Electr. Comput. Eng.*, vol. 8, no. 6, pp. 4197–4203, 2018, doi: 10.11591/ijece.v8i6.pp4197-4203.
- [6] T. T. Tran, J. W. Choi, T. T. H. Le, and J. W. Kim, "A comparative study of deep CNN in forecasting and classifying the macronutrient deficiencies on development of tomato plant," *Appl. Sci.*, vol. 9, no. 8, 2019, doi: 10.3390/app9081601.
- [7] L. Kamelia, T. K. B. A. Rahman, H. Saragih, and R. Haerani, "The comprehensive review on detection of macro nutrients deficiency in plants based on the image processing technique," *Proc. - 2020 6th Int. Conf. Wirel. Telemat. ICWT 2020*, pp. 7–10, 2020, doi: 10.1109/ICWT50448.2020.9243623.
- [8] H. Ponce, C. Cevallos, R. Espinosa, and S. Guti'erez, "Estimation of Low Nutrients in Tomato Crops Through the Analysis of Leaf Images Using Machine Learning," *J. Artif. Intell. Technol.*, vol. 1, no. 2, 2021, doi: 10.37965/jait.2021.0006.
- [9] S. Jeyalakshmi and R. Radha, "a Review on Diagnosis of Nutrient Deficiency Symptoms in Plant Leaf Image Using Digital Image Processing," *ICTACT J. Image Video Process.*, vol. 7, no. 4, pp. 1515–1524, 2017, doi: 10.21917/ijivp.2017.0216.
- [10] N. Minni and N. Rehna, "Detection of Nutrient Deficiencies in Plant Leaves using Image Processing," *Int. J. Comput. Algorithm*, vol. 5, no. 2, pp. 84–87, 2016, doi: 10.20894/ijcoa.101.005.002.004.
- [11] Y. Setiawan, H. Tanudjaja, and S. Octaviani, "Penggunaan Internet of Things (IoT) untuk Pemantauan dan Pengendalian Sistem Hidroponik," *TESLA J. Tek. Elektro*, vol. 20, no. 2, p. 175, 2019, doi: 10.24912/tesla.v20i2.2994.
- [12] K. Kularbphetong, U. Ampant, and N. Kongroj, "An Automated Hydroponics System Based on Mobile Application," *Int. J. Inf. Educ. Technol.*, vol. 9, no. 8, pp. 548–552, 2019, doi: 10.18178/ijiet.2019.9.8.1264.
- [13] V. R. P. Marcelo and J. G. Lagarteja, "Corzea: Portable maize (Zea Mays L.) nutrient deficiency identifier," *Int. J. Sci. Technol. Res.*, vol. 9, no. 2, pp. 1049–1053, 2020.
- [14] K. A. Myo Han and U. Watchareeruetai, "Black Gram Plant Nutrient Deficiency Classification in Combined Images Using Convolutional Neural Network," 2020 8th Int. Electr. Eng. Congr. iEECON 2020, 2020, doi: 10.1109/iEECON48109.2020.229562.
- [15] M. Merchant, V. Paradkar, M. Khanna, and S. Gokhale, "Mango Leaf Deficiency Detection Using Digital Image Processing and Machine Learning," 2018 3rd Int. Conf. Conver. Technol. I2CT 2018, pp. 1–3, 2018, doi: 10.1109/I2CT.2018.8529755.
- [16] S. Kolhar and J. Jagtap, "Plant trait estimation and classification studies in plant phenotyping using machine vision – A review," *Inf. Process. Agric.*, no. xxxx, 2021, doi: 10.1016/j.inpa.2021.02.006.
- [17] M. Vassallo-Barco, L. Vives-Garnique, V. Tuesta-Monteza, H. I. Mejía-Cabrera, and R. Y. Toledo, "Automatic detection of nutritional deficiencies in coffee tree leaves through shape and texture descriptors," *J. Digit. Inf. Manag.*, vol. 15, no. 1, pp. 7–18, 2017.
- [18] C. Wang, Y. Ye, Y. Tian, and Z. Yu, "Classification of nutrient deficiency in rice based on CNN model with Reinforcement Learning augmentation," *Proc. - 2021 Int. Symp. Artif. Intell. its Appl. Media, ISAIAM 2021*, pp. 107–111, 2021, doi: 10.1109/ISAIAM53259.2021.00029.
- [19] U. Watchareeruetai, P. Noinongyao, C. Wattanapaiboonsuk, P. Khantiviriya, and S. Duangsrisai, "Identification of Plant Nutrient Deficiencies Using Convolutional Neural Networks," *iEECON 2018 - 6th Int. Electr. Eng. Congr.*, pp. 2018–2021, 2018, doi: 10.1109/IEECON.2018.8712217.
- [20] V. Aleksandrov, "Identification of nutrient deficiency in bean plants by prompt chlorophyll fluorescence measurements and Artificial Neural Networks," *bioRxiv*, no. June, p. 664235, 2019, doi: 10.1101/664235.
- [21] Q. Wang, X. Mao, X. Jiang, D. Pei, and X. Shao, "Digital image processing technology under backpropagation neural network and KMeans Clustering algorithm on nitrogen utilization rate of Chinese cabbages," *PLoS One*, vol. 16, no. 3 March 2021, pp. 1–24, 2021, doi: 10.1371/journal.pone.0248923.
- [22] S. B. Sulisty, D. Wu, W. L. Woo, S. S. Dlay, and B. Gao, "Computational Deep Intelligence Vision Sensing for Nutrient Content Estimation in Agricultural Automation," *IEEE Trans. Autom. Sci. Eng.*, vol. 15, no. 3, pp. 1243–1257, 2018, doi: 10.1109/TASE.2017.2770170.
- [23] Y. Song, G. Teng, Y. Yuan, T. Liu, and Z. Sun, "Assessment of wheat chlorophyll content by the multiple linear regression of leaf image features," *Inf. Process. Agric.*, no. xxxx, 2020, doi: 10.1016/j.inpa.2020.05.002.
- [24] A. Qur'ania, P. Harsani, T. Triastinurmiatiningsih, L. A. Wulandhari, and A. A. S. Gunawan, "Color Extraction and Edge Detection of Nutrient Deficiencies in Cucumber Leaves Using Artificial Neural Networks," *CommIT (Communication Inf. Technol. J.)*, vol. 14, no. 1, p. 23, 2020, doi: 10.21512/commit.v14i1.5952.
- [25] M. Mirzaei, S. Marofi, M. Abbasi, and R. Karimi, "Nondestructive estimation of leaf nitrogen and chlorophyll contents in grapes using field hyper spectral data and support vector machines approach," no. December, 2019, [Online]. Available: https://www.researchgate.net/publication/338006025_Nondestructive_es

- timation_of_leaf_nitrogen_and_chlorophyll_contents_in_grapes_using_field_hyper_spectral_data_and_support_vector_machines_approach%0D.
- [26] L. F. R. Oliveira and R. C. Santana, "Estimation of Leaf Nutrient Concentration from Hyperspectral Reflectance in Eucalyptus using Partial Least Squares Regression," *Sci. Agric.*, pp. 1–10, 2020, doi: <http://dx.doi.org/10.1590/1678-992X-2018-0409>.
- [27] M. R. Motsara and R. N. Roy, *Guide to laboratory establishment for plant nutrient analysis, FOOD AND AGRICULTURE ORGANIZATION OF THE UNITED NATIONS Rome, 2008. 2008.*
- [28] A. Harjoko, A. Prahara, T. W. Supardi, I. Candradewi, R. Pulungan, and S. Hartati, "Image processing approach for grading tobacco leaf based on color and quality," *Int. J. Smart Sens. Intell. Syst.*, vol. 12, no. 1, pp. 1–10, 2019, doi: [10.21307/ijssis-2019-010](https://doi.org/10.21307/ijssis-2019-010).
- [29] R. Sathyavani, K. Jaganmohan, and B. Kalaavathi, "Detection of plant leaf nutrients using convolutional neural network based internet of things data acquisition," *Int. J. Nonlinear Anal. Appl.*, vol. 12, no. 2, pp. 1175–1186, 2021, doi: [10.22075/ijnaa.2021.5194](https://doi.org/10.22075/ijnaa.2021.5194).
- [30] A. Ullah, S. Aktar, N. Sutar, R. Kabir, and A. Hossain, "Cost Effective Smart Hydroponic Monitoring and Controlling System Using IoT," *Intell. Control Autom.*, vol. 10, no. 04, pp. 142–154, 2019, doi: [10.4236/ica.2019.104010](https://doi.org/10.4236/ica.2019.104010).
- [31] A. Dudwadkar, T. Das, S. Suryawanshi, R. Dolas, and T. Kothawade, "Automated Hydroponics with Remote Monitoring and Control Using IoT," vol. 9, no. 06, pp. 928–932, 2020.
- [32] S. Mashumah, M. Rivai, and A. N. Infansyah, "Nutrient Film Technique based Hydroponic System Using Fuzzy Logic Control," *Proceeding - 2018 Int. Semin. Intell. Technol. Its Appl. ISITIA 2018*, no. May 2019, pp. 387–390, 2018, doi: [10.1109/ISITIA.2018.8711201](https://doi.org/10.1109/ISITIA.2018.8711201).
- [33] R. Perwiratama, Y. K. Setiadi, and Suyoto, "Smart hydroponic farming with IoT-based climate and nutrient manipulation system," *Proceeding - 2019 Int. Conf. Artif. Intell. Inf. Technol. ICAIIT 2019*, pp. 129–132, 2019, doi: [10.1109/ICAIIIT.2019.8834533](https://doi.org/10.1109/ICAIIIT.2019.8834533).
- [34] A. Mateo-Aroca, G. García-Mateos, A. Ruiz-Canales, J. M. Molina-García-Pardo, and J. M. Molina-Martínez, "Remote image capture system to improve aerial supervision for precision irrigation in agriculture," *Water (Switzerland)*, vol. 11, no. 2, pp. 1–21, 2019, doi: [10.3390/w11020255](https://doi.org/10.3390/w11020255).
- [35] L. A. Wulandhari et al., "Plant nutrient deficiency detection using deep convolutional neural network," *ICIC Express Lett.*, vol. 13, no. 10, pp. 971–977, 2019, doi: [10.24507/icicel.13.10.971](https://doi.org/10.24507/icicel.13.10.971).
- [36] M. C. F. Lima, A. Krus, C. Valero, A. Barrientos, J. Del Cerro, and J. J. Roldán-Gómez, "Monitoring plant status and fertilization strategy through multispectral images," *Sensors (Switzerland)*, vol. 20, no. 2, 2020, doi: [10.3390/s20020435](https://doi.org/10.3390/s20020435).
- [37] H. Tian, T. Wang, Y. Liu, X. Qiao, and Y. Li, "Computer vision technology in agricultural automation—A review," *Inf. Process. Agric.*, vol. 7, no. 1, pp. 1–19, 2020, doi: [10.1016/j.inpa.2019.09.006](https://doi.org/10.1016/j.inpa.2019.09.006).
- [38] Z. Chen, C. Ying, C. Lin, S. Liu, and W. Li, "Multi-View Vehicle Type Recognition with Feedback-Enhancement Multi-Branch CNNs," *IEEE Trans. Circuits Syst. Video Technol.*, vol. 29, no. 9, pp. 2590–2599, 2019, doi: [10.1109/TCSVT.2017.2737460](https://doi.org/10.1109/TCSVT.2017.2737460).
- [39] M. Abdul, H. Radhi, A. Musa, and O. Al-Hsniue, "Enhancement of the Captured Images Under Different Lighting Conditions Using Histogram Equalization Method," *Int. J. Latest Res. Sci. Technol. ISSN*, vol. 3, no. 3, pp. 25–28, 2015, [Online]. Available: <http://www.mnkjournals.com/ijlrst.htm>.
- [40] N. Ahmad and A. Hadinegoro, "Metode Histogram Equalization untuk Perbaikan Citra Digital," *Semin. Nas. Teknol. Inf. Komun. Terap.*, vol. 2012, no. Semantik, pp. 439–445, 2012, [Online]. Available: <http://publikasi.dinus.ac.id/index.php/semantik/article/view/185>.
- [41] K. Iizuka and M. Morimoto, "A nutrient content estimation system of buffet menu using RGB-D sensor," 2018 *Jt. 7th Int. Conf. Informatics, Electron. Vis. 2nd Int. Conf. Imaging, Vis. Pattern Recognition, ICIEV-IVPR 2018*, pp. 165–168, 2019, doi: [10.1109/ICIEV.2018.8641061](https://doi.org/10.1109/ICIEV.2018.8641061).
- [42] R. Guerrero, B. Renteros, R. Castaneda, A. Villanueva, and I. Belupu, "Detection of nutrient deficiencies in banana plants using deep learning," pp. 1–7, 2021, doi: [10.1109/icaacca51523.2021.9465311](https://doi.org/10.1109/icaacca51523.2021.9465311).
- [43] Z. Xu et al., "Using deep convolutional neural networks for image-based diagnosis of nutrient deficiencies in rice," *Comput. Intell. Neurosci.*, vol. 2020, 2020, doi: [10.1155/2020/7307252](https://doi.org/10.1155/2020/7307252).
- [44] D. Zermas, H. J. Nelson, P. Stanitsas, V. Morellas, D. J. Mulla, and N. Papanikolopoulos, "A Methodology for the Detection of Nitrogen Deficiency in Corn Fields Using High-Resolution RGB Imagery," *IEEE Trans. Autom. Sci. Eng.*, vol. 18, no. 4, pp. 1879–1891, 2021, doi: [10.1109/TASE.2020.3022868](https://doi.org/10.1109/TASE.2020.3022868).
- [45] Q. U. Safitri, A. F. Huda, and A. S. Awaludin, "SEGMENTASI CITRA MENGGUNAKAN ALGORITMA FUZZY c-MEANS (FCM) DAN SPATIAL FUZZY c-MEANS (sFCM)," *Kubik J. Publ. Ilm. Mat.*, vol. 2, no. 1, pp. 22–34, 2017, doi: [10.15575/kubik.v2i1.1471](https://doi.org/10.15575/kubik.v2i1.1471).
- [46] N. Sabri, N. S. Kassim, S. Ibrahim, R. Roslan, N. N. A. Mangshor, and Z. Ibrahim, "Nutrient deficiency detection in maize (*Zea mays* L.) leaves using image processing," *IAES Int. J. Artif. Intell.*, vol. 9, no. 2, pp. 304–309, 2020, doi: [10.11591/ijai.v9.i2.pp304-309](https://doi.org/10.11591/ijai.v9.i2.pp304-309).
- [47] M. A. Islam, N. Rahman Shuvo, M. Shamsoddjaman, S. Hasan, S. Hossain, and T. Khatun, "An Automated Convolutional Neural Network Based Approach for Paddy Leaf Disease Detection," *Int. J. Adv. Comput. Sci. Appl.*, vol. 12, no. 1, pp. 280–288, 2021, doi: [10.14569/IJACSA.2021.0120134](https://doi.org/10.14569/IJACSA.2021.0120134).
- [48] M. V. Latte, S. Shidnal, and B. S. Anami, "Rule Based Approach to Determine Nutrient Deficiency in Paddy Leaf Images," *Int. J. Agric. Technol.*, vol. 13, no. 2, pp. 227–245, 2017.
- [49] A. Sinha and R. S. Shekhawat, "Olive Spot Disease Detection and Classification using Analysis of Leaf Image Textures," *Procedia Comput. Sci.*, vol. 167, no. 2019, pp. 2328–2336, 2020, doi: [10.1016/j.procs.2020.03.285](https://doi.org/10.1016/j.procs.2020.03.285).
- [50] H. Alaa, K. Waleed, M. Samir, M. Tarek, H. Sobeah, and M. A. Salam, "An intelligent approach for detecting palm trees diseases using image processing and machine learning," *Int. J. Adv. Comput. Sci. Appl.*, vol. 11, no. 7, pp. 434–441, 2020, doi: [10.14569/IJACSA.2020.0110757](https://doi.org/10.14569/IJACSA.2020.0110757).
- [51] S. Debnath et al., "Identifying individual nutrient deficiencies of grapevine leaves using hyperspectral imaging," *Remote Sens.*, vol. 13, no. 16, pp. 1–21, 2021, doi: [10.3390/rs13163317](https://doi.org/10.3390/rs13163317).
- [52] Z. Wang, M. Hu, and G. Zhai, "Application of deep learning architectures for accurate and rapid detection of internal mechanical damage of blueberry using hyperspectral transmittance data," *Sensors (Switzerland)*, vol. 18, no. 4, pp. 1–14, 2018, doi: [10.3390/s18041126](https://doi.org/10.3390/s18041126).
- [53] T. Islam, R. U. B. Rizan, Y. A. Tusher, M. Shafiuzzaman, M. A. Hossain, and S. Galib, "Nitrogen fertilizer recommendation for paddies through automating the Leaf Color Chart (LCC)," *Int. J. Adv. Comput. Sci. Appl.*, vol. 11, no. 8, pp. 745–752, 2020, doi: [10.14569/IJACSA.2020.0110891](https://doi.org/10.14569/IJACSA.2020.0110891).
- [54] M. V. Latte and S. Shidnal, "Multiple nutrient deficiency detection in paddy leaf images using color and pattern analysis," *Int. Conf. Commun. Signal Process. ICCSP 2016*, pp. 1247–1250, 2016, doi: [10.1109/ICCSP.2016.7754352](https://doi.org/10.1109/ICCSP.2016.7754352).
- [55] J. Drdsh, D. Eleyan, and A. Eleyan, "A Prediction Olive Diseases Using Machine Learning Models, Decision Tree and Naive Bayes Models," *J. Theor. Appl. Inf. Technol.*, vol. 99, no. 18, pp. 4231–4240, 2021.
- [56] S. S. Manhas, "Nutrient Deficiency Detection in Leaves using Deep Learning," 2021.
- [57] F. Jiang, Y. Lu, Y. Chen, D. Cai, and G. Li, "Image recognition of four rice leaf diseases based on deep learning and support vector machine," *Comput. Electron. Agric.*, vol. 179, no. April, p. 105824, 2020, doi: [10.1016/j.compag.2020.105824](https://doi.org/10.1016/j.compag.2020.105824).
- [58] Z. Chen and X. Wang, "Model for estimation of total nitrogen content in sandalwood leaves based on nonlinear mixed effects and dummy variables using multispectral images," *Chemom. Intell. Lab. Syst.*, vol. 195, no. July, p. 103874, 2019, doi: [10.1016/j.chemolab.2019.103874](https://doi.org/10.1016/j.chemolab.2019.103874).
- [59] V. Mande, "Estimation of chlorophyll based on FPGA and Matlab," 2017 *Int. Conf. Nascent Technol. Eng. ICNTE 2017 - Proc.*, pp. 1–5, 2017, doi: [10.1109/ICNTE.2017.7947986](https://doi.org/10.1109/ICNTE.2017.7947986).
- [60] R. Sathyavani, K. JaganMohan, and B. Kalaavathi, "Classification of nutrient deficiencies in rice crop using denseNet-BC," *Mater. Today Proc.*, no. xxxx, 2021, doi: [10.1016/j.matpr.2021.10.466](https://doi.org/10.1016/j.matpr.2021.10.466).