

Adaptive Neuro-Fuzzy Inference Systems for Modeling Greenhouse Climate

Charaf eddine LACHOURI

Electronics department
University Badji Mokhtar
Annaba, Algeria

Khaled MANSOURI

Electronics department
University Badji Mokhtar
Annaba, Algeria

Mohamed mourad LAFIFI

Electronics department
University Badji Mokhtar
Annaba, Algeria

Aissa BELMEGUENAI

Electronics research Laboratory
University 20 August 1955
Skikda, Algeria

Abstract—The objective of this work was to solve the problem of non linear time variant multi-input multi-output of greenhouse internal climate for tomato seedlings. Artificial intelligent approaches including neural networks and fuzzy inference have been used widely to model expert behavior. In this paper we proposed the Adaptive Neuro-Fuzzy Inference Systems (ANFIS) as methodology to synthesize a robust greenhouse climate model for prediction of air temperature, air humidity, CO2 concentration and internal radiation during seedlings growth. A set of ten input meteorological and control actuators parameters that have a major impact on the greenhouse climate was chosen to represent the growing process of tomato plants. In this contribution we discussed the construction of an ANFIS system that seeks to provide a linguistic model for the estimation of greenhouse climate from the meteorological data and control actuators during 48 days of seedlings growth embedded in the trained neural network and optimized using the back propagation and the least square algorithm with 500 iterations. The simulation results have shown the efficiency of the proposed model.

Keywords—Greenhouse climate; Modeling; ANFIS; Neuro-Fuzzy

I. INTRODUCTION

In recent decades, a considerable effort was devoted to develop adequate greenhouse climate and crop models, for driving simulation, control and managing [1-2]. The objective in a greenhouse climate control is to further improve the environmental conditions of plants growth in order to optimize the production process [3]. The dynamic behavior of the internal microclimate of the greenhouse is a combination of physical processes involving energy transfer (radiation and heat) and mass balance (water vapor fluxes and CO2 concentration) [4]. These processes depend on the outside environmental conditions, structure of the greenhouse, type and state of the crop and on the effect of the control actuators (typically ventilating and heating to modify inside temperature and humidity conditions, shading and artificial light to change internal radiation, CO2 injection to influence photosynthesis and fogging/cooling for humidity enrichment). The practical goal of this work is to model the greenhouse air temperature,

air humidity, CO2 concentration and internal radiation using Adaptive Neuro-Fuzzy Inference Systems from real data in order to predict the behavior inside the greenhouse. The main advantages of using automated climate control are energy conservation, better productivity, and reduced human intervention [5].

Greenhouses are considered as complex processes. In fact, they are nonlinear, multi-input multi-output (MIMO) systems which present time-varying behaviors, and they are subject to relevant disturbances depending generally on meteorological conditions. All these make it difficult to describe a greenhouse with analytic models and to control them with classical controllers [6-7].

Many conventional methods for controlling a greenhouse climate are not effective since they are based on either on-off control methods, or PID approaches. This results in a loss of energy, labor, and productivity [8]. To maintain a steady climate, a more complex control system must be used [5]. The necessities for climate control the energy consumption or maximize economic profit have instigated many researchers in this area. Today, there are various papers dealing with modeling, short term climate control, and long horizon control devised either to minimize. In [6], a model of a greenhouse using the energy balance has been presented. The proposed model is then used to carry out a simulation on the greenhouse climate (temperature and humidity) with optimal control for part of a day. In [9] the author has proposed a greenhouse model including the crop transpiration. They then made a comparison between optimal and predictive control on the considered greenhouse for part of a day. In [10] the authors have described the application of model predictive control (MPC) for temperature regulation in agricultural processes (a greenhouse). In [11], the authors have proposed the application of fuzzy logic to identify and control some multi-dimensional systems. They describe a method to reduce the complexity of a fuzzy controller and they show an application on a real system (a greenhouse). In [12], a recurrent neural network based on an Elman structure [13-14] is trained to emulate the direct dynamics of the greenhouse. In [15] the construction of fuzzy systems by fuzzy c-means for modeling

a greenhouse climate is described then the comparison with adaptive neuro-fuzzy inference system (ANFIS) and neural networks have presented. In [16] the authors have described the Greenhouse Design and Control using the adaptive neuro-fuzzy inference system.

Modern control techniques have been developed in various branches [17-18]. During the last two decades, considerable effort was devoted to develop adequate greenhouse climate and crop models, for simulation, control and management purposes [19-20]. A proper model for a greenhouse climate is an essential tool for its control [21-22]. The model can be designed in two ways. One method is based on the physical laws involved in the process and the other on the analysis of the input-output data of the process. In the first method, the thermodynamic properties of the greenhouse system are employed. However, the parameters of the equations are time variant and weather-dependent, so it is difficult to obtain accurate mathematical models of the greenhouse climate. The second approach is based on the theory of system identification [21]. Conventional methods based on system identification such as ARX approaches can not correctly model the nonlinear behavior of greenhouse climate. Intelligent methods seem to be the most proper choices for the modeling of this type of systems [3]. Because of the properties of universal approximation, they can model nonlinear systems with trained data by arbitrary fitness.

In contrast with a neural network identifier, a fuzzy identifier has some essential advantages which are described in the following. Due to its capability to handle both numerical data and linguistic information, it is feasible to apply fuzzy logic system for greenhouse climate modeling and then provide prediction for choosing optimal controlling decision. The growing process of tomato plants inside the greenhouse was modeled in this paper using the ANFIS system to predict the effect of meteorological variables and control actuators on air temperature, air humidity, CO₂ concentration and internal radiation inside the greenhouse. Specifically the relationship between the sensors signals and internal climate components is first captured via a neural network and is subsequently reflected in linguistic form with the help of a fuzzy logic based algorithm. It uses training examples as input and constructs the fuzzy if-then rules and the membership functions of the fuzzy sets involved in these rules as output. After training the estimator, its performance was tested under various internal climate conditions. Test data sets collected from a wide range of internal climate conditions (meteorological data and control actuators during 48 days of seedlings growth) were applied to the estimator for evaluating the magnitude of air temperature, air humidity, CO₂ concentration and internal radiation inside the greenhouse. The present paper describes simulation results of an ANFIS system that seeks to provide a linguistic model optimized by back-propagation and the least square algorithm for predicting the greenhouse climate.

II. EXPERIMENTAL SET-UP

The recordings were made during the period of February 20th to April 7th, 2015 on the site of BENOMOR, nursery of

tomatoes seedlings, Guelma (Algeria), in order to prepare them for the tomatoes season. The greenhouse in which all the experimental recordings were carried out is a plastic greenhouse multi chapels, multi inflatable wall, 3600 m³ of volume and 1000 m² of surface. Their major axis is parallel to the East-West direction. The roof and the side walls are polythene. This greenhouse with its climatic vectors of input-outputs is identified as a climate model represented in the "Fig. 1".

To carry out our work, we divided the 48 days of data file into three parts, the first part include the values of first 16 days and we used it as training data, the second part for the checking and the third for testing.

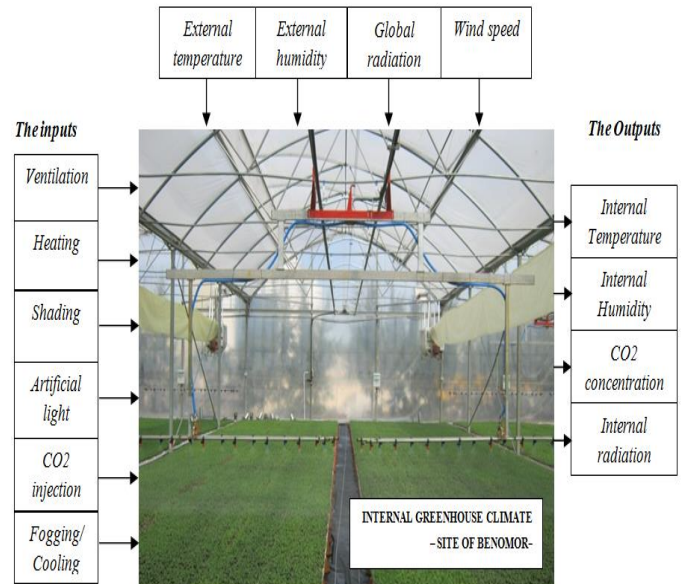


Fig. 1. Schematic of greenhouse climate

III. ANFIS PREDICTIVE ARCHITECTURE

Using a given input/output data set, the ANFIS method constructs a fuzzy inference system (FIS) whose membership function parameters are tuned (adjusted) using either a backpropagation algorithm alone, or in combination with a least squares type of method. This allows fuzzy systems to learn from the data they are modeling. FIS Structure is a network-type structure similar to that of a neural network, which maps inputs through input membership functions and associated parameters, and then through output membership functions and associated parameters to outputs [23].

In our case ANFIS is a four-layer neural network that simulates the working principle of a fuzzy inference system. The linguistic nodes in layers one and four represent the input and output linguistic variables, respectively. Nodes in layers two are term nodes acting as membership functions for input variables. Each neuron in the third layer represents one fuzzy rule, with input connections representing preconditions of the rule and the output connection representing consequences of the rules. Initially, all these layers are fully connected, representing all possible rules.

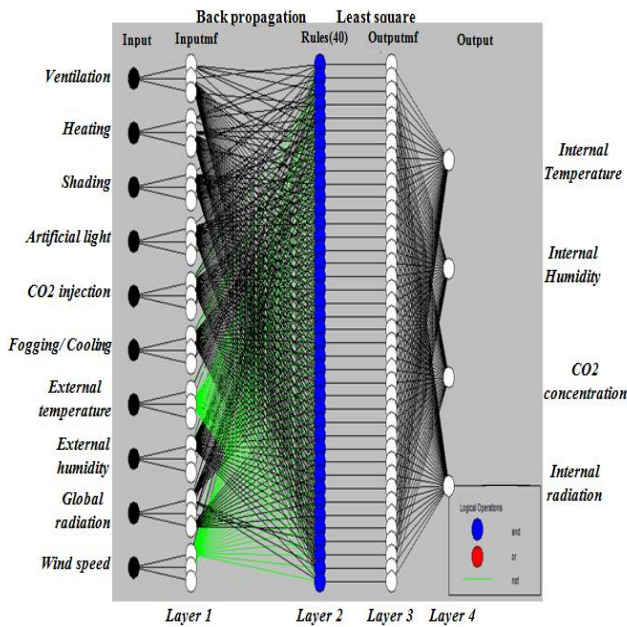


Fig. 2. ANFIS model structure of greenhouse climate

Ten feature variables, ventilation, heating, shading, artificial light, CO₂ injection, fogging/cooling, external temperature, external humidity, global radiation and wind speed, are selected as inputs of the ANFIS. Three trapezoidal membership functions are assigned to each linguistic variable. The suggested ANFIS model is shown in “Fig. 2”.

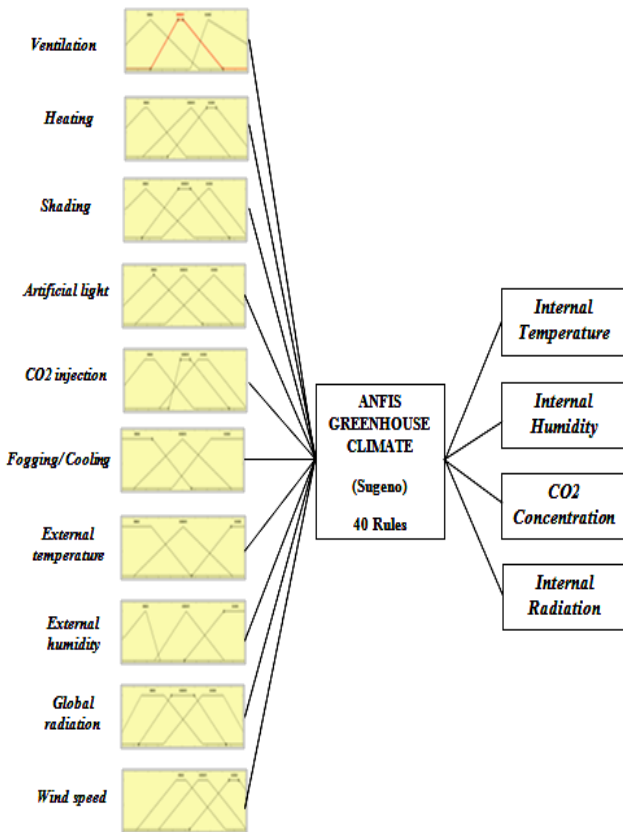


Fig. 3. Fuzzy rule architecture of the trapezoidal membership function

It shows the fuzzy rule architecture of ANFIS when the trapezoidal membership function is adopted. The architecture consists of 40 fuzzy rules. During preliminary experiments the proposed architecture proved to be sufficiently capable of extracting greenhouse climate model from the control actuators and meteorological data. “Fig. 4”, shows the flow chart for predicting the internal climate via ANFIS.

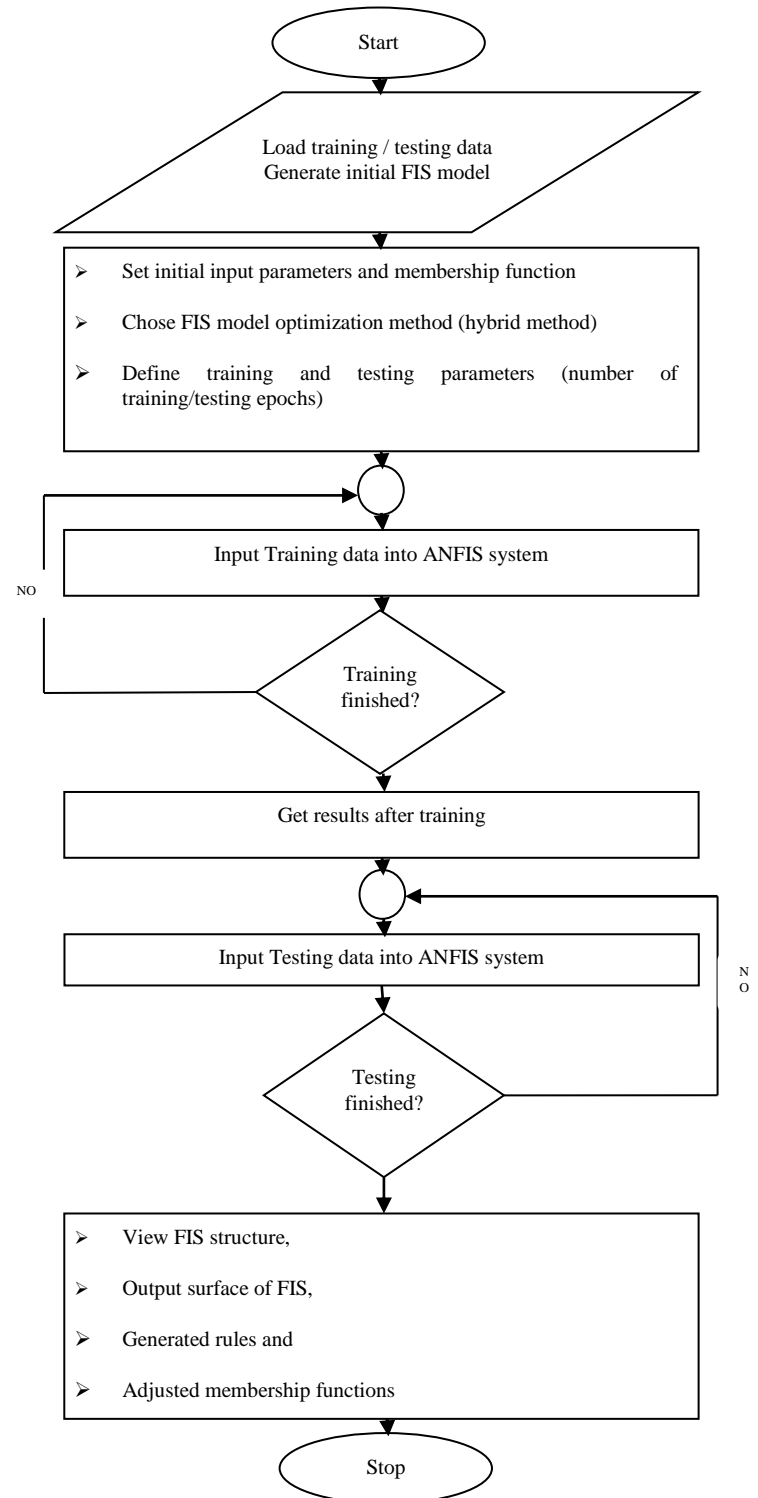


Fig. 4. Flowchart of internal climate prediction of ANFIS system

IV. ANFIS MODELING, TRAINING AND TESTING

ANFIS modeling process starts by obtaining a data set (input-output data) and dividing it into training, testing and checking data sets. Training data constitutes a set of input and output vectors. The data is normalized in order to make it suitable for the training process. This was done by mapping each term to a value between 00, 01 and 10 using the Min, moderate and Max method. This normalized data was utilized as the inputs (control actuators conditions and meteorological data) and outputs (internal climate) to train the ANFIS. In other words, two vectors are formed in order to train the ANFIS (see “Fig. 3”): Input vector = [ventilation, heating, shading, artificial light, CO₂ injection, fogging/cooling, external temperature, external humidity, global radiation and wind speed]. The output vector = [internal temperature, internal humidity, CO₂ concentration and internal radiation]. The ANFIS registers the input data only in the numerical form therefore the information about the control actuators, internal and external climate of the greenhouse must be transformed into numerical code.

The training data set is used to find the initial premise parameters for the trapezoidal membership functions by equally spacing each of the membership functions. A threshold value for the error between the actual and desired output is determined. The consequent parameters are found using the least-squares method.

Then an error for each data pair is found. If this error is larger than the threshold value, update the premise parameters using the gradient decent method as the following ($Q_{next} = Q_{nov} + \eta d$, where Q is a parameter that minimizes the error, η the learning rate, and d is a direction vector). The process is terminated when the error becomes less than the threshold value. Then the checking data set is used to compare the model with actual system. A lower threshold value is used if the model does not represent the system.

“Fig. 5”, shows the uniform falling of the value of testing error E_{Test} with the number of iterations during the testing process for the ANFIS configuration with traingular Mf and with gaussian Mf. The smallest error of testing (E_{Test}) is reached at iteration 145 (traingular Mf) and at iteration 107 for Gaussian Mf. It can be seen in the “Fig. 5” that error converges not to zero but to 12% and 2%. This is caused by the presence of some contradicting examples in the training and testing set.

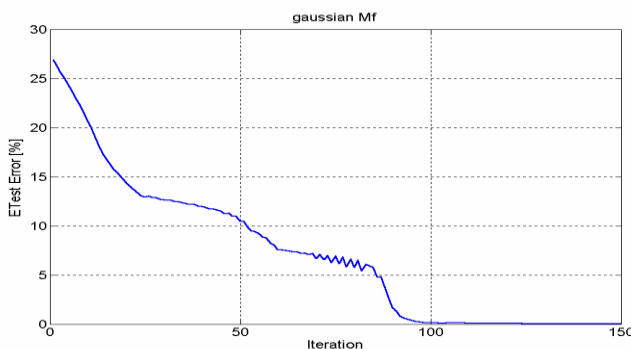


Fig. 5. Decrease of error during the testing process for the ANFIS configuration with Traingular Mf and with Gaussian Mf

Training of the ANFIS can be stopped by two methods. In the first method, ANFIS will be stopped to learn only when the testing error is less than the tolerance limit. This tolerance limit would be defined at the beginning of the training. It is obvious that the performance of the ANFIS that is trained with lower tolerance is greater than ANFIS that is trained with higher tolerance limit.

In this method the learning time will change with the architecture of the ANFIS. The second method to stop the learning is to put constraint on the number of learning iterations. In our study, the ANFIS architecture is stopped to learn after 500 training iterations.

V. DISCUSSION OF RESULTS

This chapter presents the results of experiments and the comparison and analysis of results between the experimental and ANFIS model depending on the greenhouse internal climate parameters. The results and/or the values of internal temperature, internal humidity, CO₂ concentration and internal radiation are graphically represented by means of diagrams depending on the seedlings growth time “Fig. 6”. The values from prediction coincide well with the values from Experiments.

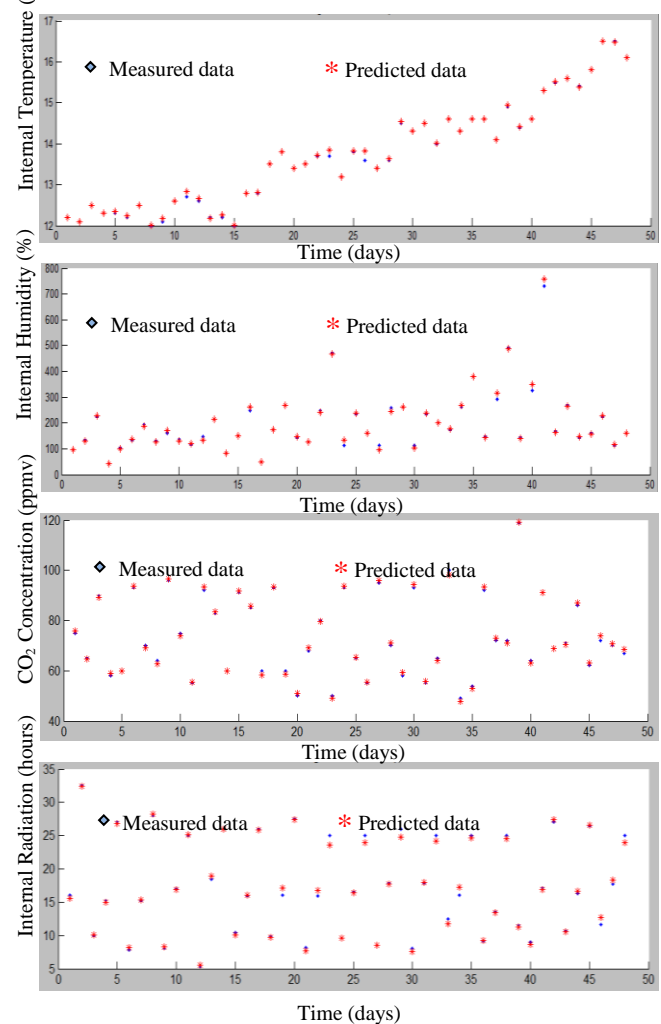


Fig. 6. Comparison of measured and predicted greenhouse internal climate

The predictive capability of using neural network and ANFIS approaches are compared using statistics, which showed that ANFIS predictions for internal temperature (Etest_Tint = 0.723), internal humidity (Etest_Hint = 0.556), CO₂ concentration (Etest_CO₂ = 0.521) and internal radiation (Etest_Rint = 0.385) were for 2% closer to the experimental measurements, compared to 6% using only neural network method.

VI. CONCLUSION

In this paper, an ANFIS is used to successfully estimate the greenhouse climate during seedlings growth process. It can be claimed that the comparison of the results obtained from the ANFIS model and of the experimental results confirms the efficiency and accuracy of the model for predicting the greenhouse climate. By using a back propagation and least square training method, the ANFIS system is trained to an accuracy of 2% error for all four components. The error of the internal climate values predicted by ANFIS with the combination of sigmoidal and gaussian membership function is only 2%, reaching an accuracy as high as 98%. When the traingular membership function is adopted the average error is around 12%, with an accuracy of 92%.

REFERENCES

- [1] Guzmán-Cruz *et al.* "Calibration of a greenhouse climate model using evolutionary algorithms," *Biosyst. Eng.*, 104: 135-142, 2009.
- [2] Rico-Garcia *et al.* "Effect of Temperature on Greenhouse Natural Ventilation Under Hot Conditions: Computational Fluid Dynamics Simulations," *Journal of Applied Sciences* 8 (24):4543- 4551, 2008.
- [3] Mohammad R. Yousefi *et al.* "A Hybrid Neuro-Fuzzy Approach for Greenhouse Climate Modeling," *IEEE*, 978-1-4244-5164-7/10/, 2010.
- [4] F. Rodríguez, "Design, Implementation, Calibration and Validation of a Dynamic Model of Greenhouse Climate Based on Physical Principles". *PhD Thesis*, University of Almería, Spain, 2002.
- [5] A. Sriraman, and R. V. Mayorga, "A Fuzzy Inference System Approach for Greenhouse Climate Control," *Environ. Informatics Archives*, vol. 2, pp.699-710, 2004.
- [6] L. Oueslati, "Commande multivariable d'une serre agricole par minimisation d'un critère quadratique," *PhD Thesis*, University of Toulon, Toulon, 1990.
- [7] H. Mirinejad *et al.* "Design and simulation of an automated system for greenhouse using LabVIEW," *American-Eurasian J. Agric. and Environ. Sci.*, vol. 3, no. 2, pp. 279-284, 2008.
- [8] H. Mirinejad, S. H. Sadati, M. Ghasemian, and H. Torab, "Control techniques in heating, ventilating and air conditioning (HVAC) systems," *J. Comput. Sci.*, vol. 4 no. 9, pp. 777-783, 2008.
- [9] M. Souissi, "Modélisation et commande du climat d'une serre agricole," *PhD Thesis*, University of Tunis, Tunis, 2002.
- [10] M. Y. El. Ghomari, H. J. Tantau, and J. Serrano, "Nonlinear constrained MPC: real-time implementation of greenhouse air temperature control," *Comput. Elect. Agric.*, vol. 49, pp. 345-356, 2005.
- [11] F. Lafont, and J. F. Balmat, "Fuzzy logic to the identification and the command of the multidimensional systems," *International J. Comput. Cognition*, vol. 2, pp. 21-47, 2004.
- [12] F. Fourati, and M. Chtourou, "A greenhouse control with feed-forward and recurrent neural networks," *Simulation Modeling Pract. and Theory*, vol.15, pp. 1016-1028, 2007.
- [13] J. L. Elman, "Finding structure in time," *Cognitive Sci.*, vol. 14, pp. 179-211, 1990.
- [14] D. T. Pham, and X. Liu, "Neural networks for identification," *Prediction and Control*, Springer-Verlag, London, England, 1995.
- [15] Gorrostieta-Hurtado Efreñ *et al.* "Greenhouse Fuzzy and Neuro-Fuzzy Modeling Techniques" *InTech*, ISBN 978-953-51-0337-0, 2012.
- [16] Pedro Ponce *et al.* "Greenhouse Design and Control," ISBN 9781138026292 - CAT# K23481, 2014.
- [17] J. Lee, and W. S. Yoo, "An improved model-based predictive control of vehicle trajectory by using nonlinear function," *J. Mech. Sci. Techn.*, vol. 23, pp. 918-922, 2009.
- [18] H. C. Cho, and K. S. Lee, "Adaptive control and stability analysis of nonlinear crane systems with perturbation," *J. Mech. Sci. Techn.*, vol. 22, pp. 1091-1098, 2008.
- [19] P. Salgado, and J. B. Cunha, "Greenhouse climate hierarchical fuzzy modeling," *Contr. Eng. Practice*, vol. 13, pp. 613-628, 2005.
- [20] A. Shukla, G. N. Tiwari, and M. S. Sodha, "Experimental study of effect of an inner thermal curtain in evaporative cooling system of a cascade greenhouse," *Solar Energy*, vol. 82, pp. 61-72, 2008.
- [21] F. Lafont, and J. F. Balmat, "Optimized fuzzy control of a greenhouse," *Fuzzy Sets Syst.*, vol. 128, pp. 47-59, 2002.
- [22] J. M. Herrero, X. Blasco, M. Martí'nez, C. Ramos, and J. Sanchis, "Robust identification of nonlinear greenhouse model using evolutionary algorithms," *Contr. Eng. Practice*, vol. 16, pp. 515-530, 2008.
- [23] J.S.R. Jang "ANFIS: Adaptive-Network-Based Fuzzy Inference System", *IEEE Trans. Systems, Man, Cybernetics*, 23(5/6):665-685, 1993.